

**TENDER DOCUMENTS**  
**FOR GREEN ROOM**  
**@ ARMY PUBLIC SCHOOL,**  
**BATHINDA MIL STATION, PUNJAB**

# BILL OF QUANTITY

**REQUEST FOR QUOTATION OF GREEN ROOM FOR SENIOR WING ASSEMBLY AREA AT ARMY  
SCHOOL, BATHINDA**

S.NO .	ITEMS	BRIEF SPECIFICATION	UNIT	A / U	RATE	TOTAL
1	<b>CIVIL WORK - ROOM AREA</b>		640	SQ.FT.		0
	<b>CIVIL WORK - ENTRY AREA AT BOTH SIDE</b>		210	SQ.FT.		0
1.1	earthwork excavation	Green Room				
		(i) Exacavation for foundation - 750mm (2'6") from ground level				
		(ii) length of Excavation - 32m (104')				
		(iii) Width of excavation - 750mm(2'6")				
		Entry Step Area				
		(i) Exacavation for foundation - 450mm (1'6") from ground level				
		(ii) length of Excavation - 16.8 m (55')				
		(iii) Width of excavation - 600mm(2')				
1.2 a	PCC for brick footing, Column & Retaining wall	(i) Base : PCC over ramped earth - 75 mm (3") @ 1:4:8 ratio				
1.2 b	Footing for Column	(i) Size: 600 x 600 mm (2'x2') 12mm TMT bar at both direction @ 180 mm spacing.				
1.2 c	Anti Termite Treatment	chemical, precautionary measures etc. complete to the excavated base foundation as per standard practice etc complete.				
1.3 a	RCC Column	(i) Height - Till Floor Level (1200 mm (4') - total height				
		(ii) Reinforcement: main bar - 12 mm TMT bar - 4 nos & stirrups 12 mm TMT @ 180 mm spacing				
1.3 b	Plinth Beam	(i) Size - 230 x 230 mm (9" x 9")				
		(ii) Reinforcement: Main bar 12mm TMT bar - 4 nos & Stirrups 12 mm TMT @ 240 mm spacing				
1.3 c	MS Column	(i) Size- 100mm x 100mm x 4mm (4"x4") square hollow section				
		(ii) MS Column to be embeded inside RCC Column & plinth Beam before casting.				
		(iii) All work to be carried out with Water level.				
1.4 a	Damp Proof Course (DPC)	(i) thickness: 25mm (1") - 1:2 mix with water proofing material				

S.NO	ITEMS	BRIEF SPECIFICATION	UNIT	A / U	RATE	TOTAL
1.4 b	Back Filling	(i) Backfilling inside foundation.				
		(ii) Compaction: Compacting the filling at every 300mm ( 1').				
1.4 c	PCC Base Flooring	(i) Base: Broken bricks with compaction				
		(ii) PCC: 75mm thick PCC in 1:4:8				
1.5 a	230mm brick wall	(i) Mortar: cement mortar ratio is 1:4				
		(ii) included scaffolding - curing - racking out joints				
1.5 b	Interior Wall Plaster	(i) Thickness: 12mm thickness of plaster with 1:6 cement mortar ratio				
		(ii) Joints: chickenwire mesh to be installed over MS column & Brickwork Joint area before plaster.				
1.5 c	Exterior Wall Plaster	(i) Thickness: 12-15 mm thickness of plaster with 1:4 cement mortar ratio				
		(ii) Joints: chickenwire mesh to be installed over MS column & Brickwork Joint area before plaster.				
1.6	RCC Lintel for windows & door	(i) Lintel: RCC lintel/MS Pipe base with stone top				
		(ii) Location: over door & window				
		(iii) Door opening is 2000 mm				
		(iv) window opening is 1200 mm				
1.7 a	Truss - Overhead accessories for roof	(i) Truss: Made of MS Square / MS L-angle of 75x75 or suitable section size.				
		(ii) Purlin: Made of MS hollow rectangular section pipe of 50mm x 25mm or suitable section size.				
1.7 b	MS SHEET ROOFING					
	P&F of MS roof sheeting as per drawing.	Roof Sheeting: Roof sheet to be fitted with self tapping screw.				
		Thickness: Roofing sheet of 0.5mm color coated gal sheet(PPGI).				
2	INTERIOR WORK					
	600 x 1200 mm TILE FLOORING					
2.1		(i) Base: 20mm thick cement mortar 1:4 (1 cement : 4 coarse sand) over PCC	SQ.FT.	555		0
		(ii) Joints: Filled with sealent to match the color of tile.				
		(iii) Size of Tile: 600 x 1200 mm				
		(iv) Tile Type: vitrified floor tile				
		(v) Tile color: Beige				

S.NO	ITEMS	BRIEF SPECIFICATION	UNIT	A / U	RATE	TOTAL
		(vi) Tile Finish: Matt / Satin				
		(vii) Spacing between tile: 3mm				
		(viii) spacer: 3mm pvc spacer				
2.2	Tile for window cill install tile at window cill with water level.	(i) Tile: same tile as flooring. (ii) Size: tile to be cut to size as per site (1200 mm (w) x 250 mm (d) (iii) Projection: 10mm projection at both side. (iv) Base: Base: 20mm thick cement mortar 1:3 (1 cement : 3 coarse sand)	NOS	2		0
2.3	Kota stone flooring P & F of kota stone flooring at step & landing platform.	(i) Base: 20mm thick cement mortar 1:4 (1 cement : 4 coarse sand) over PCC (ii) Joints: Filled with sealant to match the color of stone. (iii) Size of stone: 400 x 400 or 600x600 mm (iv) Finish: Polish to be applied over kota stone	SQ.FT.	190		0
		(v) 100mm high skirting	RFT	64		0
2.3	Grid ceiling Providing and fixing in position Suspended Tile Ceiling System with ceiling tiles in size 600x600x15mm on Grid channel	(i) Ceiling Tile Size: 600 x 600 mm (ii) Tile Thickness: 10 to 15 mm (iii) Tile Color: White (iv) Grid System: Galvanised Steel (v) Main Runners: Typically 3600 mm long (vi) Cross Tees: 600 / 1200 mm long (vii) Wall Angles: Fixed to the perimeter wall (viii) Suspension: Grid is supported by wires from purlins (ix) Support Flange Color: White	SQ.FT.	555		0
2.4	internal wall paint with putty	(i) Surface Preparation: cleaning the plastered wall (ii) Cracks: Fill any crack up to 3mm with crack sealant (iii) Primer: Good quality primer to the prepared surface (iv) Putty: 1.5 to 5 mm of coarse putty for leveling & sanding for smooth surface level.	SQ.FT.	950		0

S.NO	ITEMS	BRIEF SPECIFICATION	UNIT	A / U	RATE	TOTAL
		(v) Paint: apply 3 coats of distemper evenly for smooth finish.				
2.5	ALUMINIUM WINDOW P/f Aluminium window with powder coated as approved color.	(i) Window type: sliding (ii) Dimention of opening: 1200 x 1400 mm (iii) Frame Material: Extruded Aluminum Section confirming to IS: 733 and IS: 1285 (iv) Fixing: Dash fasteners of required dia & size (v) Filling Up: EPDM rubber gasket @ top, bottom & sides etc; wherever necessary (vi) Color: Customizable (vii) Glass: 6mm toughen glass (viii) Finish: Powder Coated	nos	2		0
2.6	ALUMINIUM DOORS P/f Aluminium door frame & door ; Opening size of - 2000 x 2400mm	(i) Door Material: Extruded Aluminum Section confirming to IS: 733 and IS: 1285 (ii) Top Half of Door: 6mm Pinned Glass (iii) Bottom Half of Door: Alu. Fixed panel (iv) Door Stopper: included (v) Door Handle: included (vi) Tower Bols: included (vii) Door spring/ AL hinges: included (viii) Locking Arrangement: included (ix) Fixing: Dash fasteners of required dia & size (x) Filling Up: EPDM rubber gasket @ top, bottom & sides etc; wherever necessary (xi) Finish: Powder Coated	Nos	2		0
2.7	ELECTRICAL					
2.7A	2x2 led light	(i) <b>Body material:</b> Steel Sheet plus PC diffuser (ii) <b>Features:</b> 2x2 Grid Panel Backlight (iii) <b>Fixing type:</b> Recessed (iv) <b>Led colour:</b> Neutral White (4k) (v) <b>Lumen output:</b> 3600 Lm (vi) <b>Product dimensions in mm:</b> S-595 (vii) <b>Shape:</b> Square (viii) <b>Wattage:</b> 36w (ix) <b>Operating Voltage:</b> 160-270V	NOS	6		0

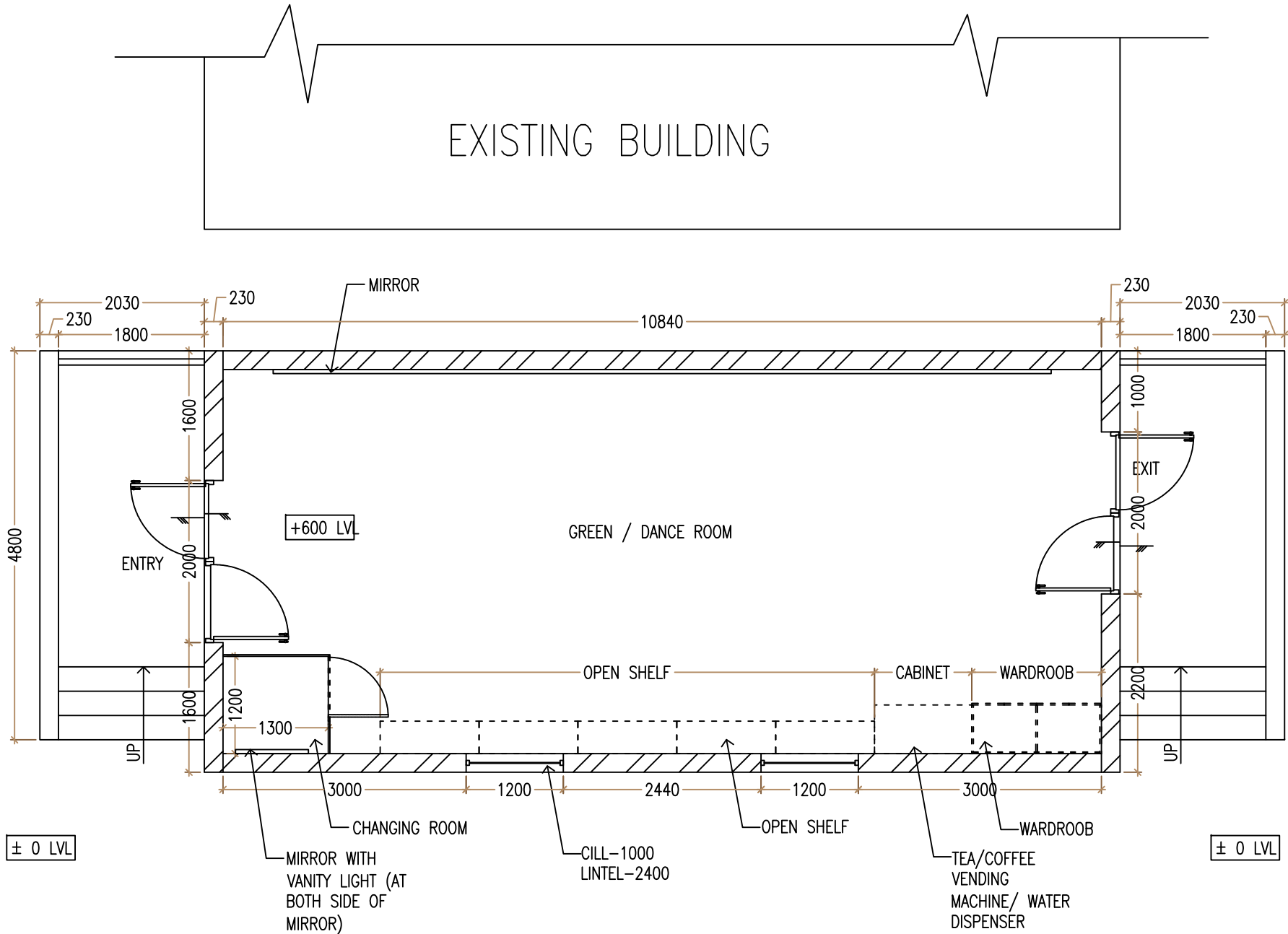
S.NO	ITEMS	BRIEF SPECIFICATION	UNIT	A / U	RATE	TOTAL
		(x) Efficiency: 100 lm/W				
2.7B	LED TUBE LIGHT FITTINGS		NOS	8		0
		(i) Model: LED Batten				
		(ii) Led colour: Neutral White (4k)				
		(iii) Wattage: 20w				
		(iv) Size: 1200mm (4')				
		(v) Mounting: at wall / ceiling				
		(vi) Material: Polycarbonate				
2.7C	providing and fixing of All internal wiring, conduiting, plug points, switch board, MCB, Distribution board, cable from nearest source, power supply to all lights & AC.	(i) Conduit Position: All electrical conduiting used must be either saddled or mounted to the wall/ceiling.	SQ.FT.	555		0
	Socket 5 Amp - 7 Nos	(ii) Type of wire: only FRLS wire/cables.				
	Socket 15 Amp - 3 Nos	(iii) Conduit: PVC conduit for wiring				
	Switch 15 Amp - 3 Nos	(iv) Flexible Conduit: Flexible conduiting to be minimized and only flexible MS conduits are allowed.				
	Switch 5 Amp - 13 Nos	(v) Wiring: Wiring should not be exposed				
	MCB 32 Amp - 3 Nos (for Ac)	(vi) Wiring Above false ceiling: All wiring above false ceiling must be installed inside conduit. No loose wiring.				
		(vii) Earthing: Earthing wire shall be connected in each socket/ light Fixture or electrical equipment.				
		(viii) Phase Load: All the Three phases should be balanced equally.				
		(ix) Tagging: Cable/wires must be tagged at DB				
2.8	AIR CONDITIONING		NOS	3		0
	Providing & Fixing of 1.5 TON INVERTER SPILT AC	(i) Refrigerant Piping Thickness: 18 Gauge				
		(ii) Conduit for Refrigerant: Copper Pipe				
		(iii) copper piping with insulation:				
		(iv) Main Power Supply: at Outdoor Unit thru 2.5 sq.mm x 3 cores (with earthing cable)				
		(v) Connecting Wiring: B/w IDU & ODU thru 4 sq.mm x 3 cores (with earthing cable)				
		(vi) Refrigerant: R32				
		(vii) Power Source: 1 Phase, 220 / 230 V, 50 Hz				
		(viii) BEE Star Rating: 5 Star				
		(ix) Ton - Cooling Only: 1.5				
		(x) Outdoor Unit Fixing: wall stand / floor stand				

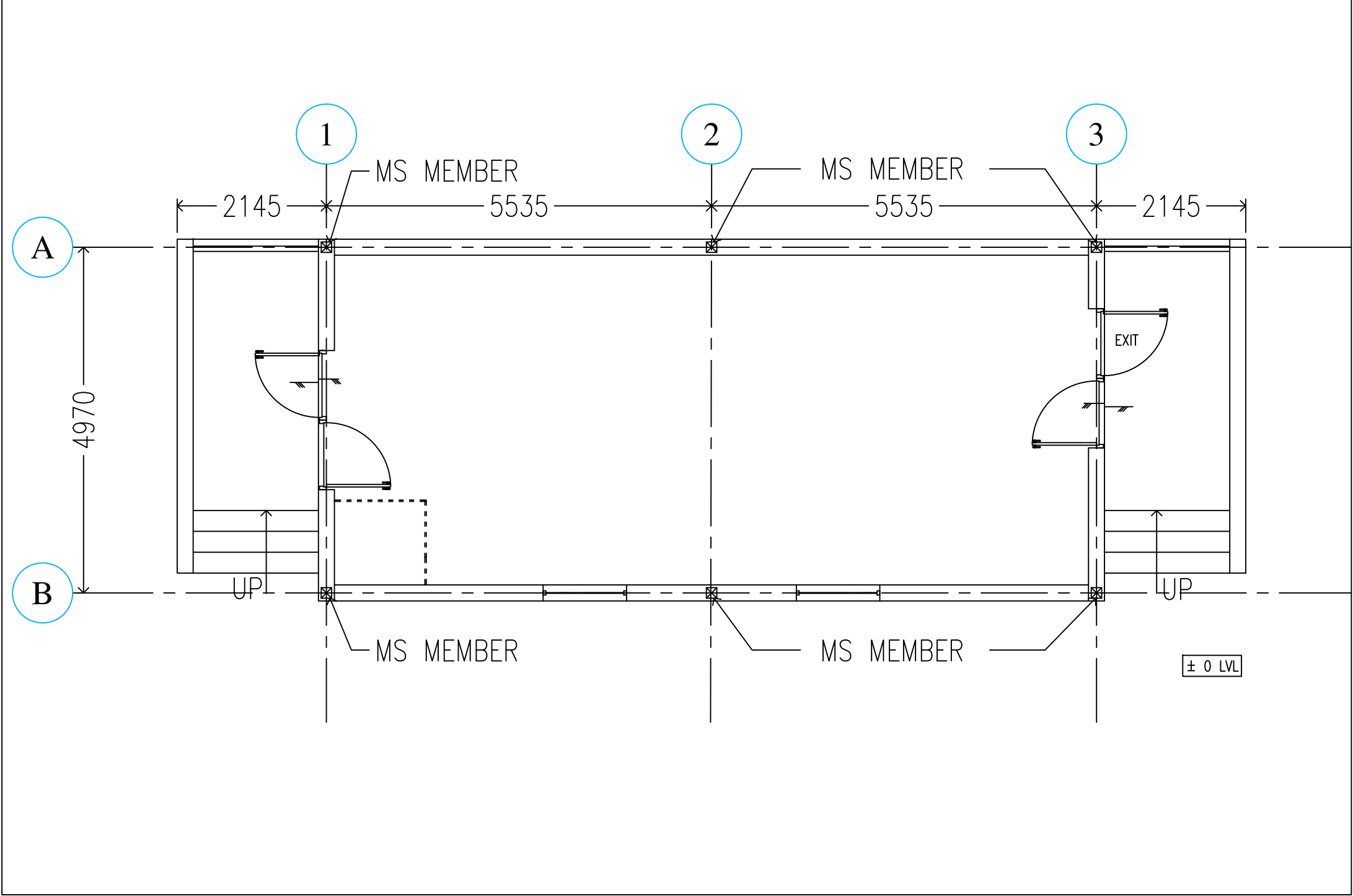
S.NO	ITEMS	BRIEF SPECIFICATION	UNIT	A / U	RATE	TOTAL
		(xi) Drain pipe: PVC pipe				
		(xii) Stabilizer - 2 KVA with working range of 170 VAC - 280 VAC				
		(xiii) MCB Product Line: Modular				
		(xiv) MCB Amp: 32 Amp Double Pole				
	<b>LOOSE FURNITURE</b>					
2.9	1600 L x 2400 H x 600 D wardroob	(i) Material: 18mm prelaminated MDF/mdf with laminate(1mm) (ii) Fitting: Hinges - channel - handle (iii) shutter: 4 shutter (iv) drawer: 2 drawer @ middle of wardroob of 2 shutter (v) Closet Hanger Rod: Stainless Steel Oval Closet Hanger Rod @ top portion of wardroob (vi) Shelf: one shelf middle of below drawer	SQFT	138		0
2.10	1200 L X 880 H X 600 D CABINET WITH SHUTTER	(i) Material: 18mm prelaminated MDF/mdf with laminate(1mm) (ii) Fitting: Hinges - channel - handle - 2Nos Lock (iii) shutter: 3 shutter (iv) Edge Banding Tape: All edge to be finished with matching color pvc edge banding tape applied thru Machine. (v) Shelf: one shelf middle of cabinet	SQ.FT.	11.5		0
2.11	1200 X 880 OPEN SHELF	(i) Material: 18mm prelaminated MDF/mdf with laminate(1mm) (ii) Edge Banding Tape: All edge to be finished with matching color pvc edge banding tape applied thru Machine. (iii) Size of one shelf: 1200 mm (W) x 880 mm (H) x 400 mm (D) (iv) Total no of shelf : 5	NOS	5		0
	CHANGING ROOM PARTITION					
2.12	Providing & fixing Change room partition as per drawing .	(i) Material: 18mm prelaminated MDF/mdf with laminate(1mm) (ii) Edge Banding Tape: All edge to be finished with matching color pvc edge banding tape applied thru Machine. (iii) Opening: 800 mm (iv) Panel size: 1200mm x 2300mm (v) Panel size: 400mm x 2300mm (vi) Bottom Fixing: 4 nos "D" bracket for support	NOS	1		0

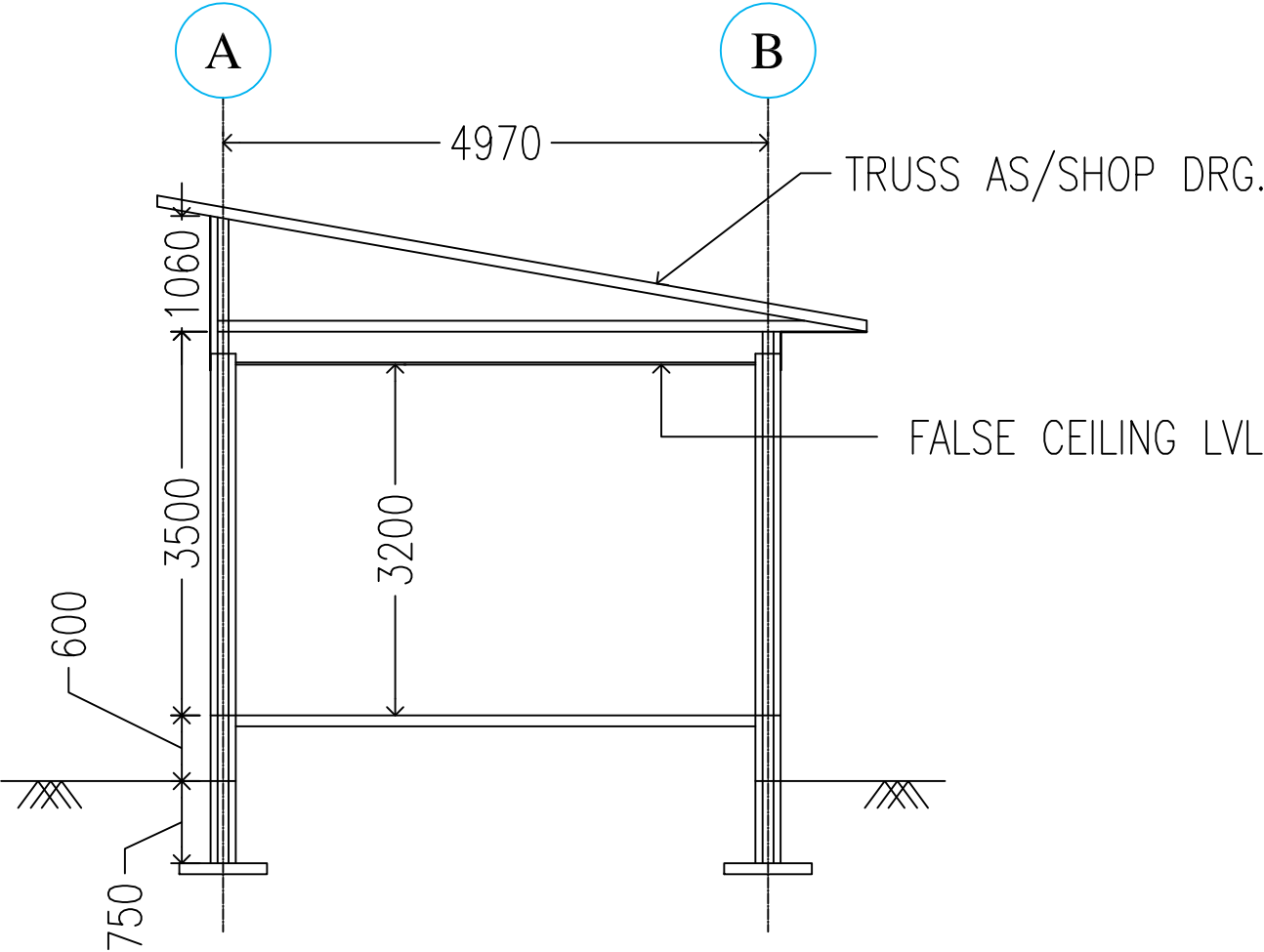


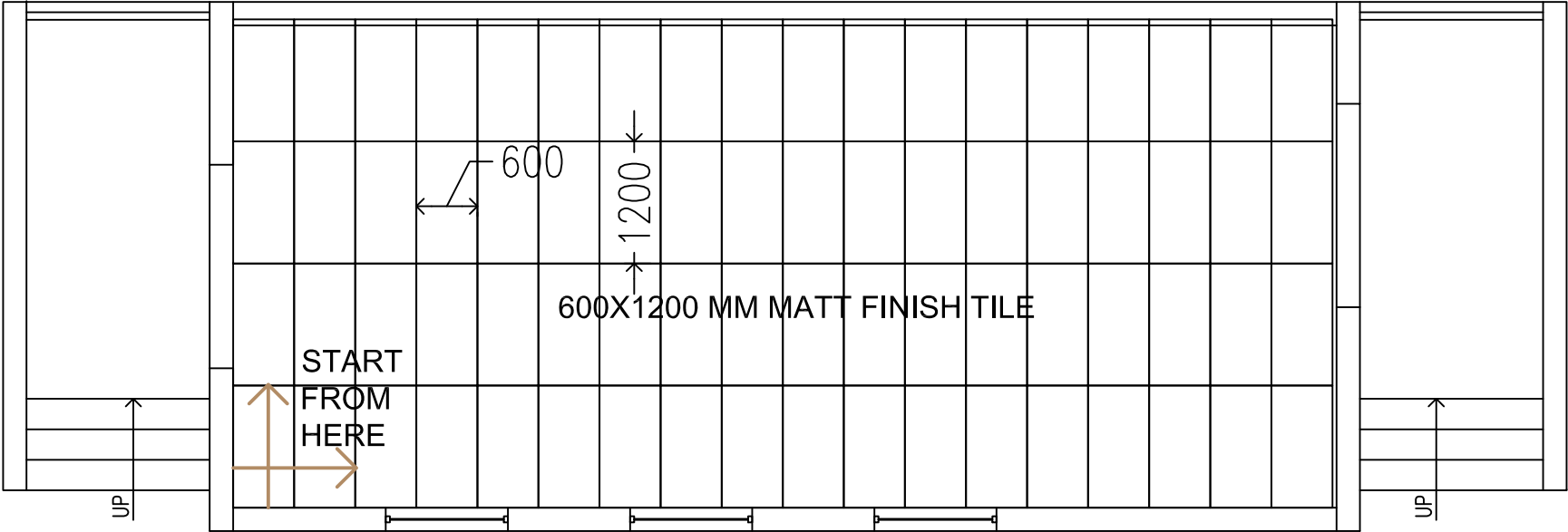
S.NO	ITEMS	BRIEF SPECIFICATION	UNIT	A / U	RATE	TOTAL
		(vii) Top Fixing: SS Rain at top for panel fixing				
		(viii) Laminate color: Customizable				
2.13	DOOR FOR CHANGE ROOM	(i) Door shutter	NOS	1		0
		(ii) Door Lock with Occupancy Indicator Stainless Steel Vacant Engaged Privacy Indicator Lock Hardware Accessory				
2.14	Vanity Light	(i) Bulb: 44 Nos	Nos	1		0
		(ii) Watt: 18 watts				
		(iii) Base: Laminated finish light box / Pre Laminated light box				
		(iv) Box Size: 9000 mm (L) x 120 mm (H) x 100 mm (D)				
		(v) Fixing: with necessary screw, hook etc. over mirror panelling				
2.15	PINUP BOARD Providing & fixing of softboard with fabric to be fixed by stables and glue and necessary fixing fittings.	(i) Size: 1800 mm (w) x 1400 mm (H)	Nos	1		0
		(ii) Top Finish: Fabric to be stables over soft board by stables & glue				
		(iii) Hook: Hook to be screwed back of soft board for hanging				
2.16	MIRROR PANNELLING Providing & fixing of 9000 x 2100 x 5mm mirror fixed over ply framework with necessary fitting / Glue.	Size of each mirror: 900mm x 2100mm	SQ.FT.	204		0
		Thickness: 6mm				
		Total no of mirror: 10 Nos				
		Base: 18mm Ply fixed over wall with screw. Ply backside painted with black japan paint.				
2.17	DIGITAL WALL CLOCK		NOS	1		0
		(i) Providing and fixing of digital wall clock over the door.				
					<b>TOTAL</b>	0

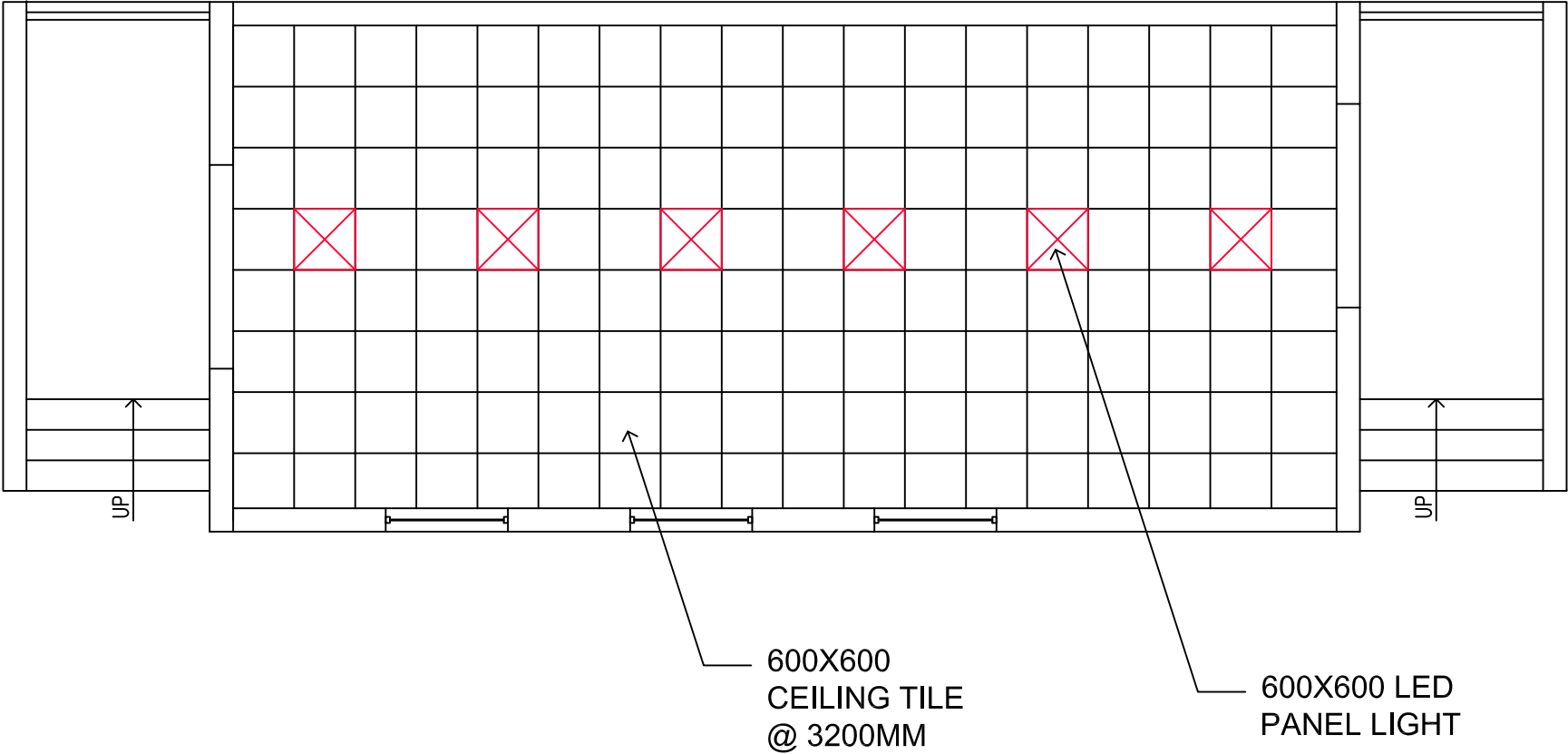
**DRAWING**

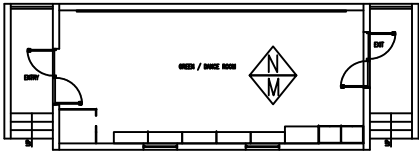




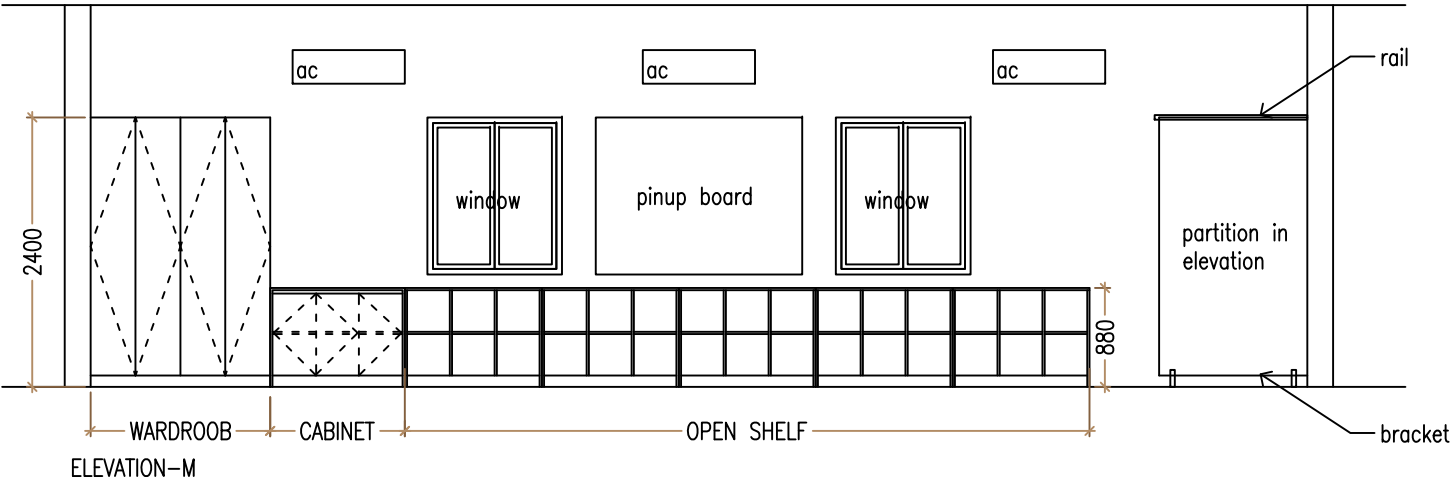
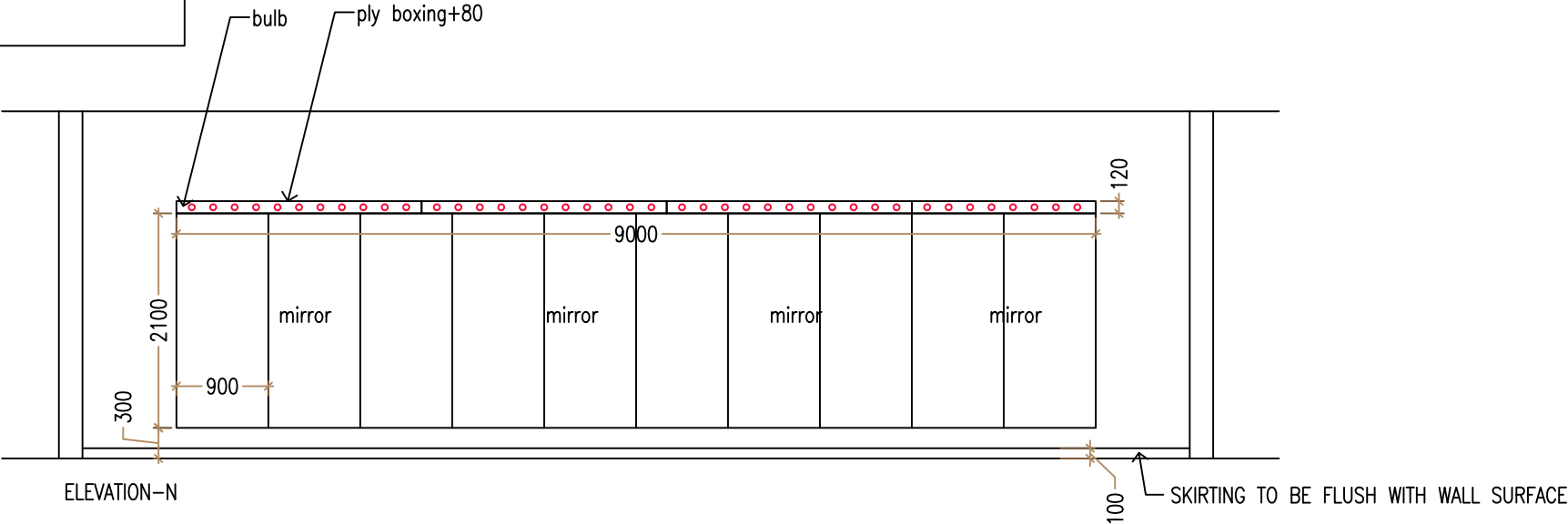








KEY FLOOR PLAN





LEGEND		
SYMBOL	DESCRIPTION	HEIGHT
	6A, 5 PIN SWITCH SOCKET	REFER ELEVATION DRAWINGS
	16A, 5 PIN SWITCH SOCKET	REFER ELEVATION DRAWINGS
	DATA	
	TELEPHONE OUTLET	
	DISTRIBUTION BOARD	
	SWITCH BOARD	1050MM FFL
	CEILING ROSE	2100MM FFL

